

The logo for RAFT AS/RS. The word "RAFT" is in large, white, sans-serif capital letters. The letter "A" is replaced by a blue right-angled triangle pointing to the left. To the right of "RAFT", the letters "AS/RS" are written vertically in a smaller, blue, sans-serif font.

**RAFT** AS/RS

**RIGHT ANGLE FAST TRANSFER**

**TAKE CONTROL OF YOUR WAREHOUSE  
AND DISTRIBUTION WITH RAFT**

The game-changing AS/RS shuttle solution

# NOW-GEN TECHNOLOGY

Flexible – Scalable – 3-Dimensional

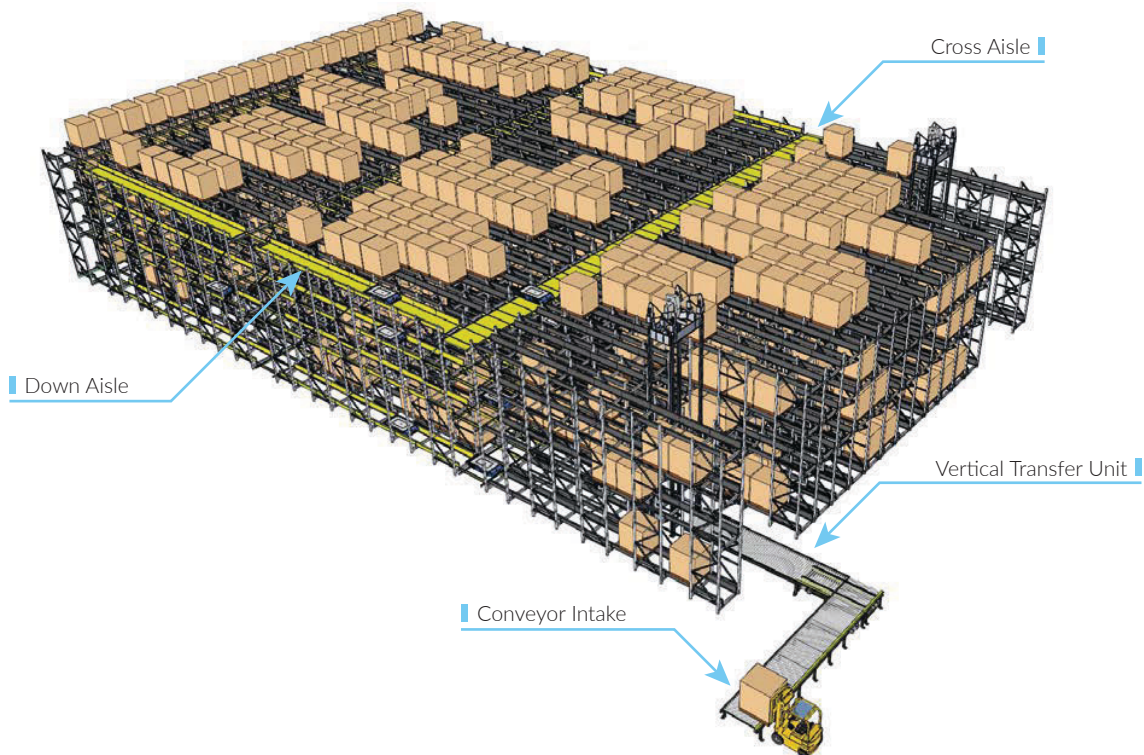
RAFT or Right Angle Fast Transfer is a fully automated, high-density pallet storage to meet today's demanding warehousing and distribution needs.

## What you need to know about RAFT AS/RS?

It's scalable for any high-throughput operation and it's flexible, allowing you to automatically react to inventory and order processing changes. But we're only getting started!

RAFT AS/RS shuttles pallets via put wall or conveyor intake and swiftly navigates inventory storage and order fulfillment through the integration of cutting-edge automation and SRSI's proprietary SwiftCurrent WES.

RAFT is a 3-dimensional "lift and run" system. Pallets are lifted to the designated storage level and transferred both cross-lane and down-lane to the next available pallet position. **Maximum storage density and automated pallet accessibility are as easy as that!**



The Result of 20+ Years Experience  
in AS/RS Shuttle Technology...

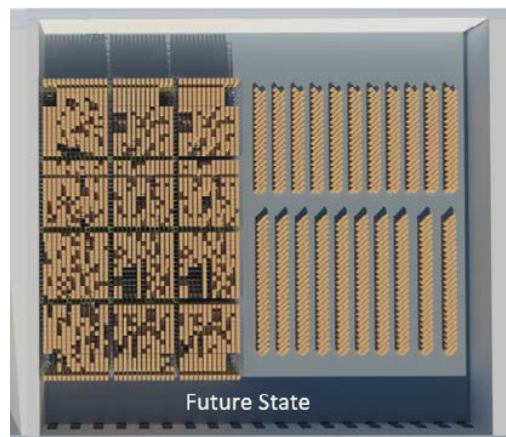
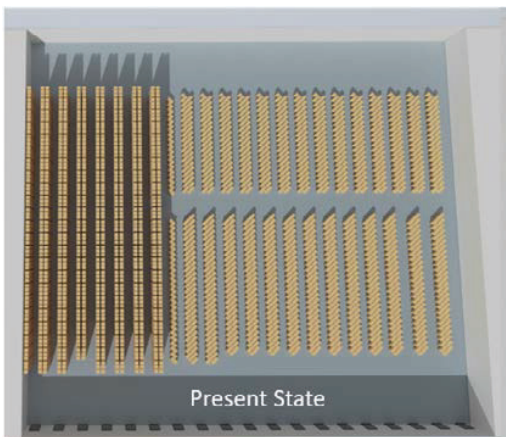
**RIFT** AS / RS

## ADVANTAGES

- ▶ Optimize storage space utilization
- ▶ Improve material flow & order throughput
- ▶ Gain full visibility of completed & in-process orders
- ▶ Reduce labor & overhead costs
- ▶ Minimize warehouse carbon footprint
- ▶ Flexible & scalable – option to fully integrate with AGVs & AMRs



Significant Improvement in space utilization (>2x) within same area Modular deployment capability



# HOW IT WORKS

RAFT AS/RS is easily configured to meet the operational needs of your distribution center. Choose between traditional pallet intake via conveyor or a put wall configuration. RAFT is programmed to be fully integrated into your operation.

SwiftCurrent WES directs the operation of your RAFT shuttle system and automatically adjusts to changes in inventory and order processing.

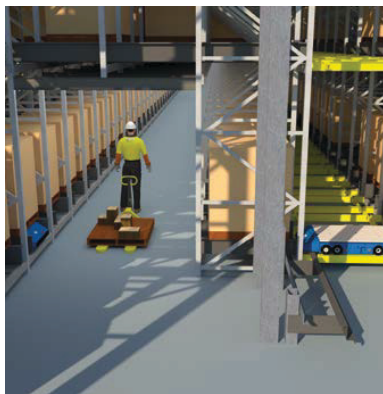
## Via Conveyor or Put Wall

- ▶ Pallets arrive/depart via conveyor to the vertical transfer unit (VTU).
- ▶ System selects the optimal pallet storage location.
- ▶ VTU utilized to move pallets between levels.
- ▶ RAFT robots deliver & take-away pallets.



## RAFT High Density AS/RS + Fast Case Picking

RAFT ASRS automatically supplies reserve storage for high-density case pick operations. Choose the best design or a mix of casepick configurations to best suit your fulfillment goals. Case pick to pallet jack, to AMR (autonomous mobile robot), or to conveyor for optimized productivity. Seamlessly customized and integrated with SwiftCurrent WES to deliver the flexible, adaptable order fulfillment solution you need.



CASE TO PALLET PICKING



CASE TO ROBOT PICKING



CASE TO CONVEYOR PICKING

# BRAINS BEHIND RAFT









RAFT robots are directed by SRSI's proprietary, 5G Cloud-enabled Warehouse Execution System, SwiftCurrent. SwiftCurrent WES is the brains behind RAFT, ensuring optimal performance and inventory control. The customizable WES manages the entire operation, automatically provides full reporting on pallet traceability and SKUs stored, and easily integrates with existing WMS.

## Advantages of RAFT powered by SwiftCurrent WES include:

- ▶ Seamlessly directs pallet movement
- ▶ Automatically performs inventory rotation
- ▶ Autonomous control of aging stock inventory
- ▶ Reports 100% accurate daily stock-counts

The stock-count feature runs automatically in off-peak times. The RAFT robot counts and tracks pallets in the storage lane, while the software compares the count to the stock value on the database and reports any discrepancies. Updated daily. Fully autonomous.

Beyond RAFT, SwiftCurrent WES can synchronize and manage all of your DC workflows:

 <b>INBOUND</b>	<b>ORDER-FLOW MANAGEMENT</b> <ul style="list-style-type: none"><li>✓ Manages Orders</li><li>✓ Waveless Process</li><li>✓ Waving Options</li><li>✓ Priority-Based System</li><li>✓ Manual Override</li></ul>	 <b>INVENTORY</b>	<b>PICKING MANAGEMENT</b> <ul style="list-style-type: none"><li>✓ Multiple Pick Options</li><li>✓ Dynamic Batching</li><li>✓ Android Ready</li><li>✓ Voice &amp; Wearables</li><li>✓ Zone Management</li></ul>	 <b>SLOTTING</b>	<b>PACKING MANAGEMENT</b> <ul style="list-style-type: none"><li>✓ Put-to-Order Process</li><li>✓ Pack Stations</li><li>✓ Single &amp; Multi-Line</li><li>✓ Cartonization</li><li>✓ Value-Add Processes</li></ul>
 <b>OUTBOUND</b>	<b>SHIPPING MANAGEMENT</b> <ul style="list-style-type: none"><li>✓ Rate Shop Carriers</li><li>✓ Prints Shipping Labels</li><li>✓ Ships Globally</li><li>✓ Route &amp; Dock Staging</li><li>✓ Load Truck Functions</li></ul>	 <b>LABOR</b>	<b>LABOR MANAGEMENT</b> <ul style="list-style-type: none"><li>✓ Real-Time Labor</li><li>✓ Labor Balancing</li><li>✓ Labor Standards</li><li>✓ Coaching</li><li>✓ Incentive Programs</li></ul>	 <b>MHE</b>	<b>MHE AUTOMATION</b> <ul style="list-style-type: none"><li>✓ Integrated with MHE</li><li>✓ Goods-to-Person</li><li>✓ Storage &amp; Retrieval</li><li>✓ Conveyor Routing</li><li>✓ Sorter &amp; Robotics</li></ul>



**DESIGN. INTEGRATION. IMPLEMENTATION.**

**Irving, TX - Southwest Regional Office -  
Sales & Engineering**

7301 N. State Highway 161, Suite 160  
Irving, TX 75039

**Dallas -  
Corporate Headquarters**

6301 Gaston Avenue, Suite 560  
Dallas, TX | 75214

**Crested Butte, CO - Mountain Regional  
Office - Sales & Engineering**

10 Crested Butte Way, Unit L3  
Mt. Crested Butte, CO 81225

**Nuevo León - Mexico Regional Office -  
Sales & Engineering**

Av. Roberto Garza Sada 101, 2do Piso, Col. Carrizalejo, Garza  
García, NL, México 66254